

Laylah Ali: The Greenheads Series, Williams College Museum of Art

Checklist with Images

Laylah Ali
American, b. 1968
painting, gouache: Untitled, 2004
gouache and pencil on paper
frame: 26 1/2 x 35 x 1 1/4 in. (67.3 x 88.9 x 3.2 cm)
(sight): 19 1/2 x 28 in. (49.5 x 71.1 cm)
Williams College Museum of Art, Museum purchase, Kathryn Hurd
Fund, in honor of Linda Shearer, Director 1989-2004
M.2005.1



Laylah Ali
American, b. 1968
painting, gouache: Untitled, 2000
gouache and pencil on paper
8 x 5 in. (20.3 x 12.7 cm)
frame: 11 3/4 x 9 x 1 1/4 in. (29.8 x 22.9 x 3.2 cm)
Williams College Museum of Art, Gift of Jenny Holzer
M.2007.9.4



Laylah Ali
American, b. 1968
painting, gouache: Untitled, 2000
gouache and pencil on paper
7 1/2 x 4 7/8 in. (19.1 x 12.4 cm)
frame: 11 7/8 x 9 3/8 x 1 1/4 in. (30.2 x 23.8 x 3.2 cm)
Williams College Museum of Art, Gift of Jenny Holzer
M.2007.9.5



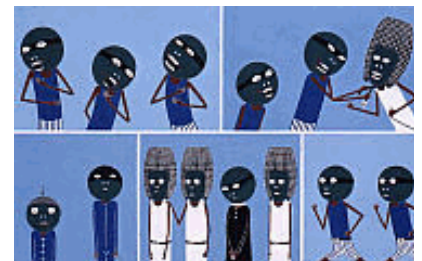
Laylah Ali
American, b. 1968
painting, gouache: Untitled, 2004
gouache and pencil on paper
Overall: 15 1/2 x 15 1/8 in. (39.3 x 38.4 cm)
frame: 21 x 20 3/4 in. (53.3 x 52.7 cm)
Williams College Museum of Art, Gift of Jenny Holzer
M.2007.9.9



Laylah Ali
American, b. 1968
painting: Untitled, 2001
gouache and pencil on paper
8 x 4 1/2 in. (20.3 x 11.4 cm)
frame: 12 5/8 x 9 1/8 x 1 1/4 in. (32.1 x 23.2 x 3.2 cm)
Collection Albright-Knox Art Gallery, Buffalo, New York, Charles
Clifton Fund, 2001
TL.2012.1



Laylah Ali
American, b. 1968
painting: Untitled, 1998
gouache on paper
8 3/4 x 13 3/4 in. (22.2 x 34.9 cm)
frame: 15 x 19 5/8 x 1 1/4 in. (38.1 x 49.8 x 3.2 cm)
Davis Museum and Cultural Center, Wellesley College, Wellesley,
Massachusetts, Museum purchase, Erna Bottigheimer Sands (Class
of 1929) Art Acquisition Fund
TL.2012.2



Laylah Ali
American, b. 1968
painting: Untitled, 1999
gouache and pencil on paper
8 1/2 x 11 in. (21.6 x 27.9 cm)
frame: 13 3/4 x 16 1/2 x 1 1/4 in. (34.9 x 41.9 x 3.2 cm)
Lent by deCordova Sculpture Park and Museum, Lincoln,
Massachusetts, Museum Purchase
TL.2012.3



Laylah Ali
American, b. 1968
painting: Untitled, 2005
gouache, acrylic, and pencil on paper
7 x 5 in. (17.8 x 12.7 cm)
frame: 12 x 10 1/4 x 1 1/4 in. (30.5 x 26 x 3.2 cm)
Institute of Contemporary Art, Boston, Massachusetts, Gift of Tristin
and Martin Mannion
TL.2012.4



Laylah Ali
American, b. 1968
painting: Untitled, 1999
gouache and pencil on paper
8 1/8 x 13 3/16 in. (20.6 x 33.5 cm)
Collection Museum of Contemporary Art, Chicago, Restricted gift of
Robert and Sylvie Fitzpatrick in memory of William B. Cook
1999.57
TL.2012.5.1



Laylah Ali
American, b. 1968
painting: Untitled, 1999
gouache and pencil on paper
9 3/16 x 14 5/16 in. (23.3 x 36.4 cm)
Collection Museum of Contemporary Art, Chicago, The William B.
Cook Memorial Fund
1999.58
TL.2012.5.2



Laylah Ali
American, b. 1968
painting: Untitled, 2003
gouache and pencil on paper
10 1/2 x 10 1/2 in. (26.7 x 26.7 cm)
Museum of Modern Art, New York. The Judith Rothschild Foundation
Contemporary Drawings Collection Gift, 2005.
TL.2012.6



Laylah Ali
American, b. 1968
painting: Untitled, 1998
gouache and pencil on paper
9 x 13 in. (22.9 x 33 cm)
frame: 13 5/8 x 18 1/8 x 1 1/4 in. (34.6 x 46 x 3.2 cm)
Collection of the New Museum of Contemporary Art, New York, the
Altoids Curiously Strong Collection. Gift of Altoids.
TL.2012.7



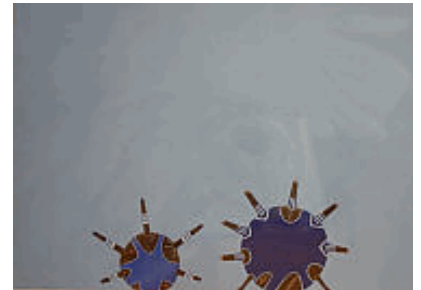
Laylah Ali
American, b. 1968
painting: Untitled (WCMA ONLY), 2000
gouache and pencil on paper
19 x 14 in. (48.3 x 35.6 cm)
frame: 25 x 19 in. (63.5 x 48.3 cm)
Seattle Art Museum, The Volunteers' Association and the General
Acquisition Fund.
TL.2012.8



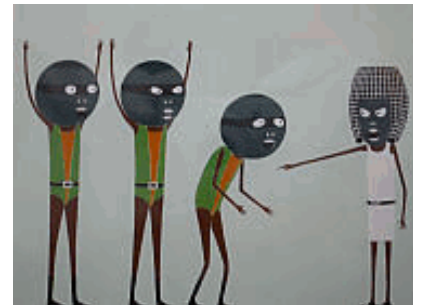
Laylah Ali
American, b. 1968
painting: Untitled, 2004
gouache and pencil on paper
10 3/8 x 8 3/8 in. (26.4 x 21.3 cm)
The Studio Museum in Harlem, New York, 05.3.2
TL.2012.9



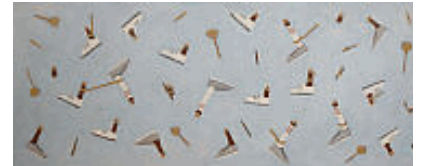
Laylah Ali
American, b. 1968
painting: Untitled, 2005
gouache and acrylic on paper
5 x 7 in. (12.7 x 17.8 cm)
Courtesy of the artist
TL.2012.10



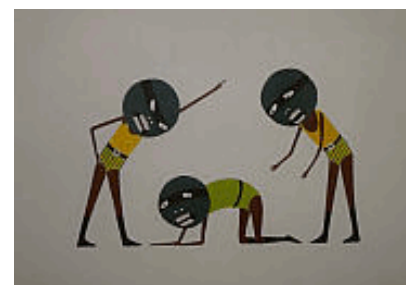
Laylah Ali
American, b. 1968
painting: Untitled (WCMA ONLY), 1998
gouache and pencil on paper
11 x 9 1/2 in. (27.9 x 24.1 cm)
Currier Museum of Art, Manchester, New Hampshire. Museum
Purchase: The Henry Melville Fuller Acquisition Fund, 2012.21
TL.2012.11



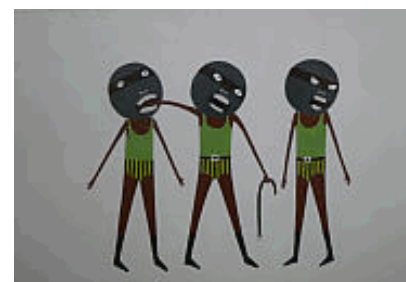
Laylah Ali
American, b. 1968
painting: Untitled, 2000
gouache and pencil on paper
4 1/2 x 10 5/8 in. (11.4 x 27 cm)
frame: 9 1/8 x 15 1/4 x 1 1/4 in. (23.2 x 38.7 x 3.2 cm)
Collection of Melva Bucksbaum and Raymond J. Leary
TL.2012.12



Laylah Ali
American, b. 1968
painting: Untitled, 1996
gouache and pencil on paper
7 1/2 x 11 in. (19.1 x 27.9 cm)
frame: 17 x 20 x 2 in. (43.2 x 50.8 x 5.1 cm)
Peggy Cooper Cafritz
TL.2012.13.1



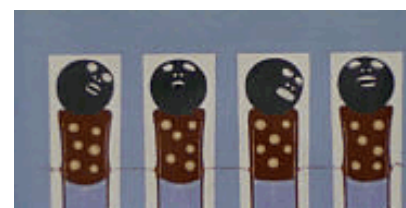
Laylah Ali
American, b. 1968
painting: Untitled, 1996
gouache and pencil on paper
7 1/2 x 11 in. (19.1 x 27.9 cm)
frame: 17 1/8 x 20 1/4 x 2 in. (43.5 x 51.4 x 5.1 cm)
Peggy Cooper Cafritz
TL.2012.13.2



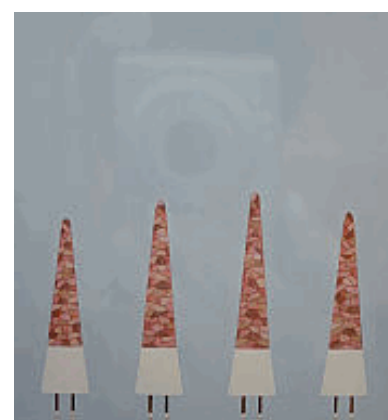
Laylah Ali
American, b. 1968
painting: Untitled, 2000
gouache and pencil on paper
8 1/4 x 5 1/2 in. (21 x 14 cm)
frame: 12 1/2 x 10 in. (31.8 x 25.4 cm)
James Casebere, New York, NY
TL.2012.14.1



Laylah Ali
American, b. 1968
painting: Untitled, 1999
gouache and pencil on paper
4 3/4 x 9 3/4 in. (12.1 x 24.8 cm)
frame: 9 x 14 3/4 in. (22.9 x 37.5 cm)
James Casebere, New York, NY
TL.2012.14.2



Laylah Ali
American, b. 1968
painting: Untitled, 2004
gouache and pencil on paper
15 13/16 x 14 1/2 in. (40.2 x 36.8 cm)
frame: 21 1/2 x 20 1/4 x 1 1/4 in. (54.6 x 51.4 x 3.2 cm)
Charlotte and Bill Ford Collection
TL.2012.15



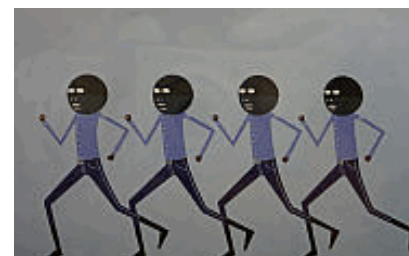
Laylah Ali
American, b. 1968
painting: Untitled, 1999
gouache and pencil on paper
9 x 13 in. (22.9 x 33 cm)
frame: 15 1/2 x 19 x 1 1/4 in. (39.4 x 48.3 x 3.2 cm)
Collection Debbie Friedlander and Louis Brown
TL.2012.17



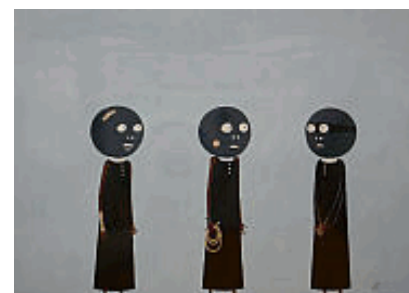
Laylah Ali
American, b. 1968
painting: Untitled, 1998
gouache and pencil on paper
6 x 12 in. (15.2 x 30.5 cm)
frame: 10 1/2 x 16 7/8 x 1 1/2 in. (26.7 x 42.9 x 3.8 cm)
Collection of Robert Goff and Matthew McAlpin
TL.2012.18



Laylah Ali
American, b. 1968
painting: Untitled, 2000
gouache and pencil on paper
13 x 21 in. (33 x 53.3 cm)
frame: 18 7/8 x 27 1/2 x 1 1/4 in. (47.9 x 69.9 x 3.2 cm)
Collection of Francine Bishop Good and David Horvitz
TL.2012.19



Laylah Ali
American, b. 1968
painting: Untitled (WCMA ONLY), 2000
gouache and pencil on paper
10 x 14 in. (25.4 x 35.6 cm)
frame: 15 1/4 x 19 1/4 x 1 1/4 in. (38.7 x 48.9 x 3.2 cm)
Nick Hiley
TL.2012.20



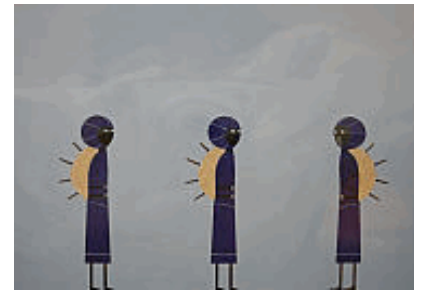
Laylah Ali
American, b. 1968
painting: Untitled, 2004
gouache and pencil on paper
19 11/16 x 27 3/4 in. (50 x 70.5 cm)
Vicky Hughes and John Smith
TL.2012.21



Laylah Ali
American, b. 1968
painting: Untitled, 2004
gouache and pencil on paper
10 3/8 x 8 3/8 in. (26.4 x 21.3 cm)
Collection of Ninah and Michael Lynne
TL.2012.22.1



Laylah Ali
American, b. 1968
painting: Untitled, 2004
gouache and pencil on paper
19 3/8 x 27 3/4 in. (49.2 x 70.5 cm)
frame: 26 1/2 x 34 3/4 x 1 1/4 in. (67.3 x 88.3 x 3.2 cm)
Collection of Ninah and Michael Lynne
TL.2012.22.2



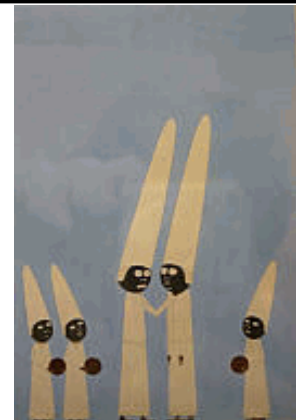
Laylah Ali
American, b. 1968
painting: Untitled, 2001
gouache and pencil on paper
27 x 18 in. (68.6 x 45.7 cm)
Collection of Ninah and Michael Lynne
TL.2012.22.3



Laylah Ali
American, b. 1968
painting: Untitled, 2005
gouache, acrylic and pencil on paper
6 1/2 x 5 in. (16.5 x 12.7 cm)
frame: 10 x 8 x 2 in. (25.4 x 20.3 x 5.1 cm)
Tristin and Martin Mannion, Boston, Massachusetts
TL.2012.23



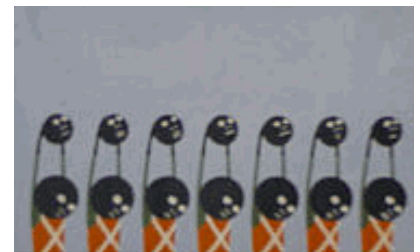
Laylah Ali
American, b. 1968
painting: Untitled, 2000
gouache and pencil on paper
19 x 13 in. (48.3 x 33 cm)
Jesse L. Martin
TL.2012.24



Laylah Ali
American, b. 1968
painting: B Painting, 1996
gouache and pencil on paper
7 1/2 x 11 in. (19.1 x 27.9 cm)
Mitchell A. Miller
TL.2012.25



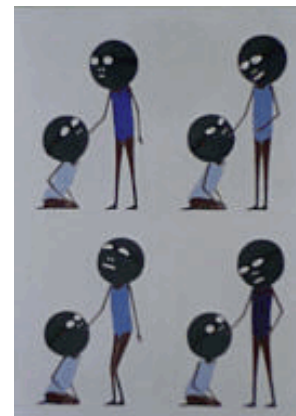
Laylah Ali
American, b. 1968
painting: Untitled (Orange X's), 2000
gouache and pencil on paper
8 x 14 in. (20.3 x 35.6 cm)
Susan Greenberg Minster
TL.2012.26



Laylah Ali
American, b. 1968
painting: Untitled, 2001
gouache and pencil on paper
27 x 18 in. (68.6 x 45.7 cm)
frame: 33 x 24 1/4 x 1 1/4 in. (83.8 x 61.6 x 3.2 cm)
CAP Art Limited
TL.2012.27



Laylah Ali
American, b. 1968
painting: Untitled, 1998
gouache and pencil on paper
14 x 10 in. (35.6 x 25.4 cm)
frame: 19 1/4 x 15 1/8 in. (48.9 x 38.4 cm)
Steven Rogowski
TL.2012.28



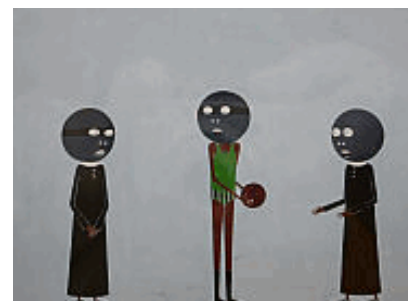
Laylah Ali
American, b. 1968
painting: Untitled, 2000
gouache and pencil on paper
19 x 13 in. (48.3 x 33 cm)
frame: 25 1/4 x 18 1/2 in. (64.1 x 47 cm)
A. G. Rosen
TL.2012.29



Laylah Ali
American, b. 1968
painting: Untitled, 2003
gouache and pencil on paper
10 5/8 x 14 3/4 in. (27 x 37.5 cm)
frame: 15 1/2 x 20 in. (39.4 x 50.8 cm)
Private Collection
TL.2012.30



Laylah Ali
American, b. 1968
painting: Untitled, 2000
gouache and pencil on paper
10 x 14 in. (25.4 x 35.6 cm)
frame: 15 1/2 x 19 1/4 x 1 1/4 in. (39.4 x 48.9 x 3.2 cm)
Collection of Jim Sokol and Lydia Cheney
TL.2012.31.1



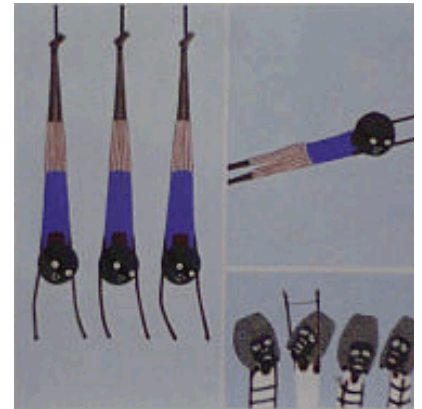
Laylah Ali
American, b. 1968
painting: Untitled, 2000
gouache and pencil on paper
7 x 6 in. (17.8 x 15.2 cm)
frame: 11 1/4 x 10 x 1 1/4 in. (28.6 x 25.4 x 3.2 cm)
Collection of Jim Sokol and Lydia Cheney
TL.2012.31.2



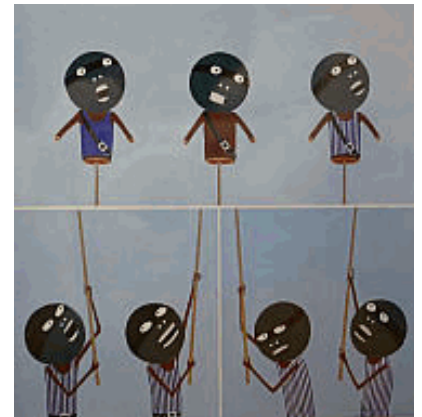
Laylah Ali
American, b. 1968
painting: Untitled, 2003
gouache and pencil on paper
8 9/16 x 8 1/4 in. (21.7 x 21 cm)
Collection of Rebecca and Alexander Stewart, Seattle
TL.2012.32



Laylah Ali
American, b. 1968
painting: Untitled, 1997
gouache and pencil on paper
10 x 10 in. (25.4 x 25.4 cm)
Anthony and Beth Terrana
TL.2012.33.1



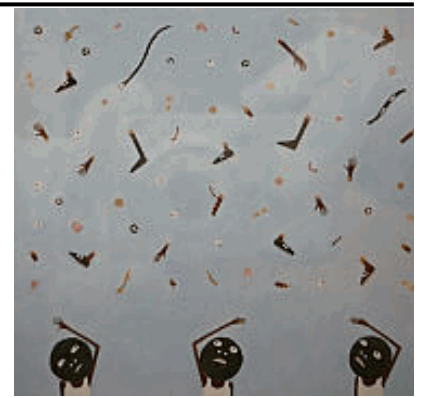
Laylah Ali
American, b. 1968
painting: Untitled, 1999
gouache and pencil on paper
10 1/4 x 10 in. (26 x 25.4 cm)
Anthony and Beth Terrana
TL.2012.33.2



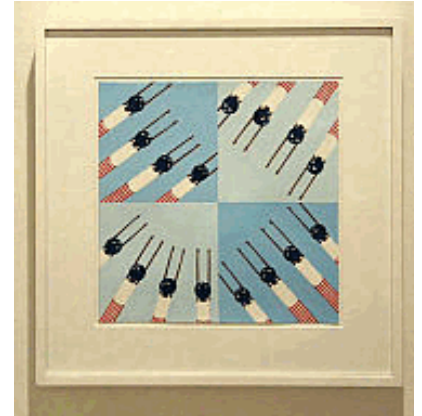
Laylah Ali
American, b. 1968
painting: Untitled, 2000
gouache and pencil on paper
13 x 19 in. (33 x 48.3 cm)
Anthony and Beth Terrana
TL.2012.33.3



Laylah Ali
American, b. 1968
painting: Untitled, 2000
gouache and pencil on paper
10 x 10 1/4 in. (25.4 x 26 cm)
frame: 15 x 16 in. (38.1 x 40.6 cm)
Anthony and Beth Terrana
TL.2012.33.4



Laylah Ali
American, b. 1968
painting: Untitled, 1997
gouache and pencil on paper
10 x 10 in. (25.4 x 25.4 cm)
frame: 15 1/4 x 15 1/4 in. (38.7 x 38.7 cm)
Anthony and Beth Terrana
TL.2012.33.5



Laylah Ali
American, b. 1968
painting: Untitled, 2000-2001
gouache and pencil on paper
8 x 12 in. (20.3 x 30.5 cm)
frame: 13 3/4 x 13 3/4 x 1 1/4 in. (34.9 x 34.9 x 3.2 cm)
J. Bigby
TL.2012.34

